

Leukemia Protection

Non-adjuvanted



PUREVAX®

Powerful Delivery. Pure Potency.

How to Use the VET JET™ transdermal vaccination system to Administer PUREVAX® Recombinant Leukemia Vaccine.



Precautions:

- > **DO NOT "DRY-FIRE" the Injector**
Firing the device without fluid in the nozzle may result in damage to the injector or the nozzle/adaptor assembly.
- > **Keep the PLUNGER and NOZZLE PROPERLY ALIGNED**
Be sure the flat sides of the plunger are aligned with the flat sides of the nozzle base. Improper alignment will prevent activation of the injector.
- > **How to DEACTIVATE the Injector**
Turn dose knob *clockwise* up to the "0-mL" position. Then, press and hold the blue activator button while turning dose knob *counterclockwise* down at least 1 full turn.

Helpful Hints:

If diluent will not draw down

- > Remove the nozzle from vial adapter and reconnect again.
- > Ensure nozzle is firmly connected to the vial adapter.
- > If you still experience difficulties, replace nozzle.

If a very loud noise occurs when you press the blue activator button, you may have dry-fired the device – this means there was a large amount of air or no fluid in the nozzle.

- > Ensure you have fluid in the nozzle by drawing down dose slowly.

For removal of large air bubbles:

- > With the vaccine vial still attached and the dose withdrawn into the nozzle, gently tap the nozzle to move any air bubbles to the nozzle tip
- > If there is a large air bubble at the tip, simply wind the device up (turn the dosing knob *clockwise*) to re-inject the air bubble into the vaccine vial.
- > Next, wind the device down (turn the dosing knob *counterclockwise*) to withdraw the 0.25 mL dose volume.


Purity. Potency. Peace of Mind.


vet jet™

**Before dosing,
make sure you have the following:**

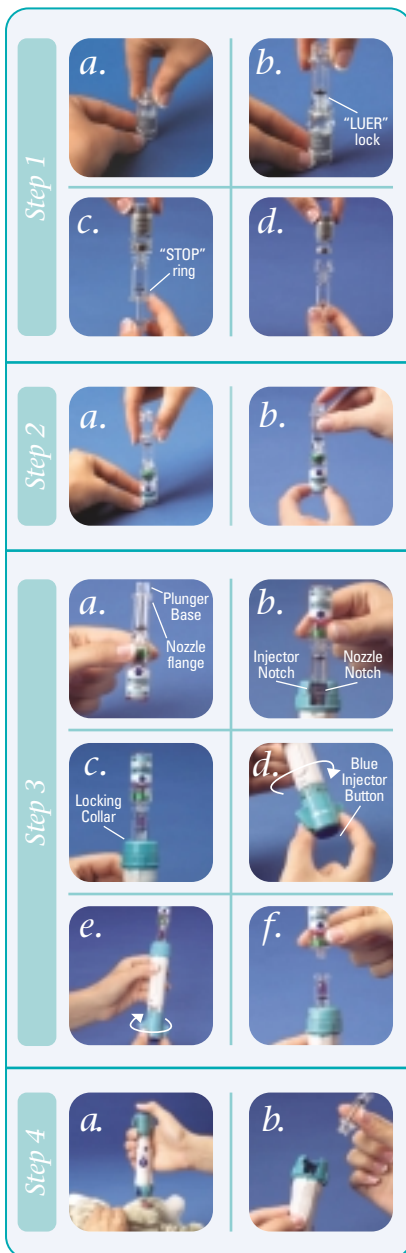


Step 1: Prepare the Diluent

- Attach the adapter to the diluent vial.
- Attach the nozzle (with plunger inserted) to the adapter.
- Withdraw the diluent into the nozzle, filling the nozzle to the STOP (indicated by the ring that encircles the nozzle just above the base flange) with 0.5 mL of diluent.
- Remove the diluent vial from the adapter/nozzle assembly.

Step 2: Reconstituting the Vaccine

- Attach the adapter/nozzle assembly with the diluent to the (lyophilized) vaccine vial.
- Inject the diluent into the vaccine vial.
- Gently shake to reconstitute the vaccine.



Step 3: Preparing the Dose

- Ensure that the flat sides of the nozzle plunger are aligned with the flat sides of the nozzle base.
- Slide the adapter/nozzle/vaccine vial assembly into the device.
- Turn the collar to lock into place (turn clockwise until it stops).
- Turn the dose dial clockwise (up) until the blue injector button pops out.

AT THIS POINT THE VET JET IS ACTIVATED.

Important Note:

Once the VET JET is activated, do not press the blue button until you are ready to administer vaccine. Do not attempt to remove a nozzle from the device once it is activated.

- Turn the dose dial counter-clockwise (down) to withdraw 0.25 mL of the vaccine into the nozzle.
- Be sure to remove any large air bubbles in the nozzle.
- Remove the vial and adapter from the nozzle. The nozzle with vaccine will remain attached to the injector.

Step 4: Administering the Vaccine

- Firmly hold the injector with the nozzle perpendicular to the injection site.
- While holding firmly against the skin, press the blue injector button and count 1 second.

The vaccine is now administered.

- Unlock the collar (turn counter-clockwise) and remove the nozzle from the VET JET.
- Discard the nozzle and vaccine vials in accordance with appropriate medical procedures.

CAUTIONS

- > Always be certain that the nozzle is filled with liquid before activating the injector.
- > **DO NOT DRY-FIRE THE INJECTOR.**
- > When administering the vaccine, ensure the injector is held firmly in contact with the injection site until the vaccine dose has been delivered.
- > Do not point the injector toward people or animals. Do not inject vaccine into air or onto animal's haircoat.
- > Do not attempt to remove the nozzle from an activated injector. See reverse for how to deactivate the injector.
- > Do not immerse the injector in water or other solutions.
- > The device contains a feature that is designed to be the first component to fail at the termination of active life. When this failure occurs, the device will lock or be unusable. If this is observed or other malfunctions occur, call Merial Technical Services at **1-888-MERIAL1 (1-888-637-4251), option 3 for assistance.**

For complete directions please refer to the insert found inside the VET JET packaging.

Must be used only for cats and only with PUREVAX Recombinant Leukemia Vaccine.

**Caution:
Federal (USA) law restricts this injector to use by or on the order of a licensed veterinarian.**

Manufactured under the following U.S. patents:
5,782,802, 4,966,581, and 5,893,397



©PUREVAX is a registered trademark, and TMVET JET is a trademark, of Merial.
©2004 Merial Limited. Duluth, GA. All rights reserved. VAC-4-1003.69.

